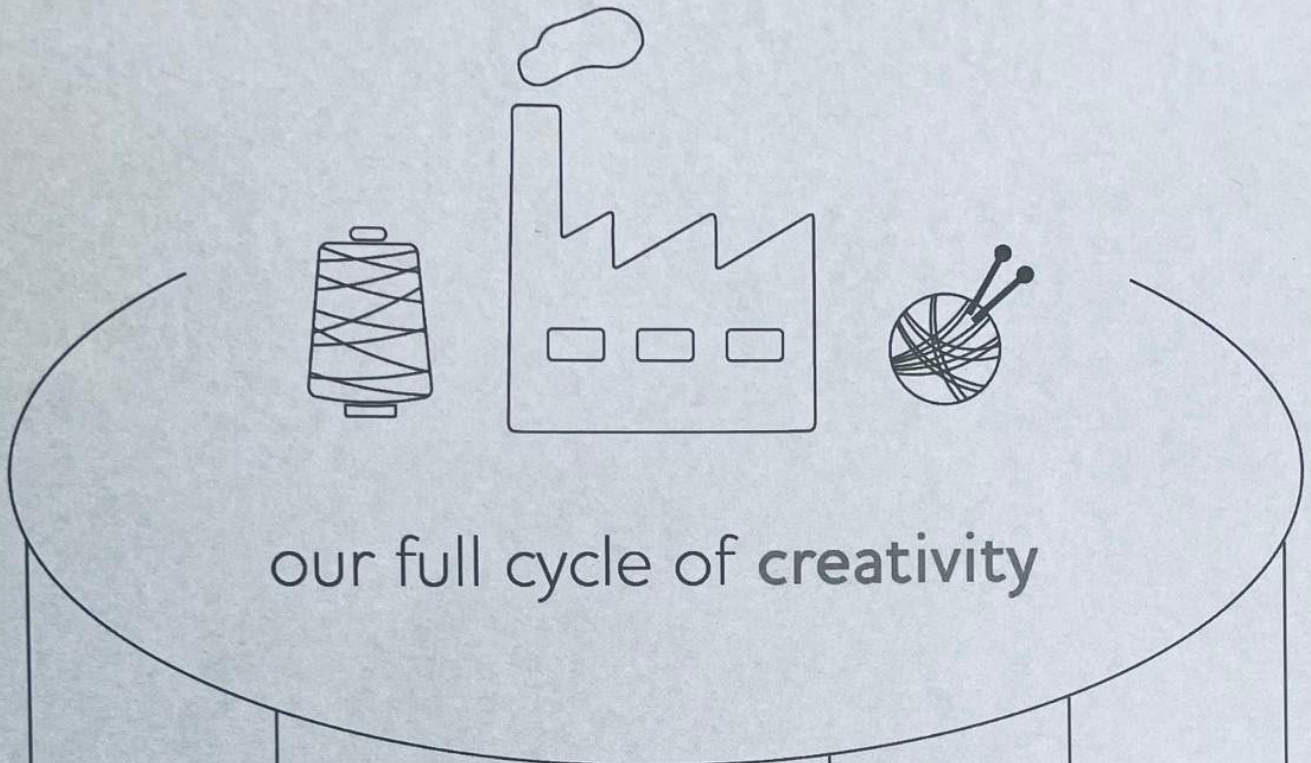




ECAFIL BEST

SEASONAL
WINTER 25/26

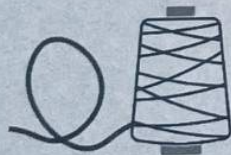
TREND



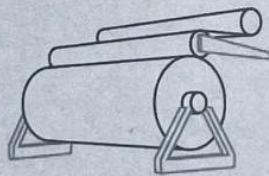
spinning



twisting
and winding



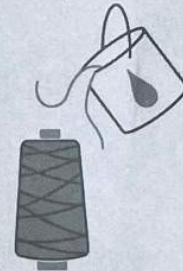
mercerising



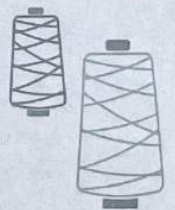
brushing



dyeing
tops, hanks



printing
hanks, continuous



QUALITY CERTIFIED BY:



ICEA-TX-104



ICEA-TX-104



ICEA-TX-104



ICEA-TX-104



ICEA-TX-104



ICEA-TX-104



Ø ZDHC



1. KID COTTON

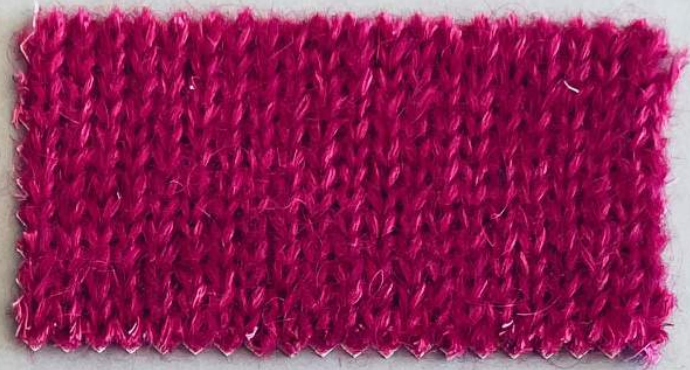
Nm 8500

65% SUPERKID MOHAIR (WM) 35% COTONE BIO (CO)

65% SUPERKID MOHAIR (WM) 35% ORGANIC COTTON (CO)



MOHAIR RMS
ON DEMAND



1. KID COTTON AIR

Nm 4000

60% SUPERKID MOHAIR (WM) 40% COTONE BIO (CO)

60% SUPERKID MOHAIR (WM) 40% ORGANIC COTTON (CO)



MOHAIR RMS
ON DEMAND



2. BABY SOFT COTTON

Nm 3400

42% BABY ALPACA (WP) 18% LANA MERINOS EXTRAFINE (WV) 40% COTONE (CO)

42% BABY ALPACA (WP) 18% EXTRAFINE MERINO WOOL (WV) 40% COTTON (CO)



RWS WOOL
ON DEMAND



3. CLOWN

Nm 2000

47% MOHAIR (WM) 32% LANA (WV) 21% COTONE (CO)

47% MOHAIR (WM) 32% WOOL (WV) 21% COTTON (CO)



RWS WOOL
ON DEMAND



4. KILUX

Nm 9000

46% KID MOHAIR (WM) 50% POLIAMMIDE (46% GRS) (PA)

4% POLIESTERE (PL)

46% KID MOHAIR (WM) 50% POLYAMIDE (46% GRS) (PA)

4% POLYESTER (PL)



MOHAIR RMS
ON DEMAND



5. RAMOS

NM 3300

20% LANA (WV) 8% ALPACA (WP) 10% SETA (SE) 31% ACRILICO (PC)
16% POLIESTERE (PL) 15% POLIAMMIDE (PA)
20% WOOL (WV) 8% ALPACA (WP) 10% SILK (SE) 31% ACRYLIC (PC)
16% POLYESTER (PL) 15% POLYAMIDE (PA)



5. BOLLY

NM 3200

18% LANA (WV) 7% ALPACA (WP) 9% SETA (SE) 30% ACRILICO (PC)
18% POLIESTERE (PL) 18% POLIAMMIDE (PA)
18% WOOL (WV) 7% ALPACA (WP) 9% SILK (SE) 30% ACRYLIC (PC)
18% POLYESTER (PL) 18% POLYAMIDE (PA)



6. ELEANOR

NM 3000

61% LANA (WV) 19% BABY ALPACA (WP) 20% POLIAMMIDE (PA)
61% WOOL (WV) 19% BABY ALPACA (WP) 20% POLYAMIDE (PA)



7. MELODY

NM 1800

30% BABY ALPACA (WP) 21% SETA (SE) 13% LANA MERINOS EXTRAFINE (WV)
36% POLIAMMIDE (16% GRS) (PA)
30% BABY ALPACA (WP) 21% SILK (SE) 18% EXTRAFINE MERINO WOOL (WV)
36% POLYAMIDE (16% GRS) (PA)



RWS WOOL ON DEMAND



8. GIN

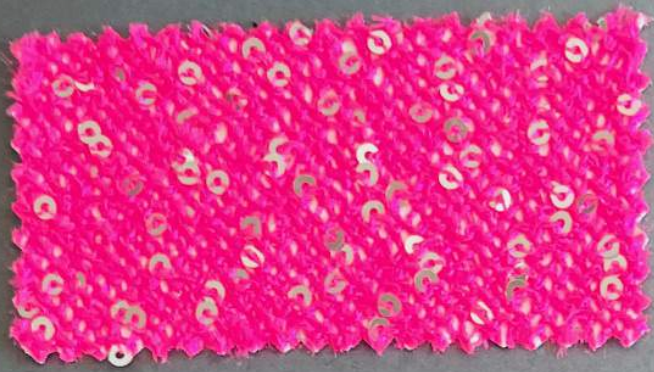
NM 3300



35% BABY ALPACA (WP) 55% LANA (WV) 10% POLIAMMIDE GRS (PA)
35% BABY ALPACA (WP) 55% WOOL (WV) 10% GRS POLYAMIDE (PA)



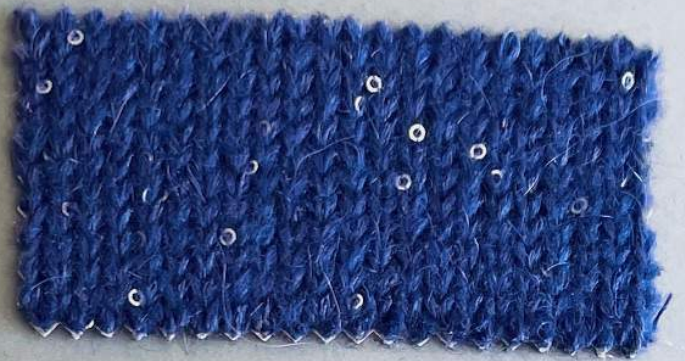
RWS WOOL ON DEMAND







9. ESTRELLA  

NM 7000
NM 10500
100% POLIAMMIDE (PA)
100% POLYAMIDE (PA)



10. VIRGINIA MINISTAR  

NM 3200
22% MOHAIR (WM) 29% ACRILICO (PC)
49% POLIAMMIDE (22% GRS) (PA)
22% MOHAIR (WM) 29% ACRYLIC (PC)
49% POLYAMIDE (22% GRS) (PA)



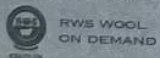
11. JUPITER  

NM 2200
30% MOHAIR (WM) 40% ACRILICO (PC) 30% POLIAMMIDE GRS (PA)
30% MOHAIR (WM) 40% ACRYLIC (PC) 30% GRS POLYAMIDE (PA)



12. ZAFFIRO - ZAFFIRO PRINT  

NM 3800
55% LANA (WW) 45% POLIAMMIDE GRS (PA)
55% WOOL (WM) 45% GRS POLYAMIDE (PA)



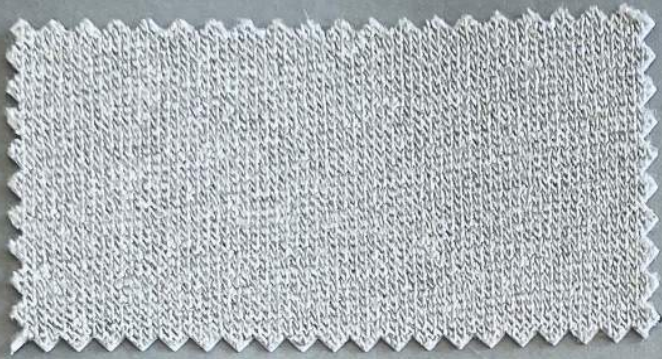
13. TECS 

NM 7500
31% ALPACA SUPERFINE (WP) 11% LANA (WW)
22% POLIAMMIDE (17% GRS) (PA) - 35% ACRILICO (PC) 1% ELASTAN (EA)
31% SUPERFINE ALPACA (WP) 11% WOOL (WM)
22% POLYAMIDE (17% GRS) (PA) - 35% ACRYLIC (PC) 1% ELASTAN (EA)

NM 11000

28% ALPACA SUPERFINE (WP) 10% LANA (WW)
32% POLIAMMIDE (22% GRS) (PA) - 29% ACRILICO (PC) 1% ELASTAN (EA)
28% SUPERFINE ALPACA (WP) 10% WOOL (WM)
32% POLYAMIDE (22% GRS) (PA) - 29% ACRYLIC (PC) 1% ELASTAN (EA)



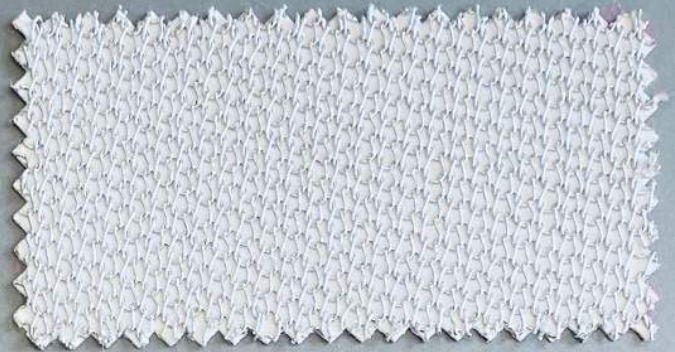


14. STAR

NM 26000

88% VISCOSA (VI) 12% POLIESTERE (PL)

88% VISCOSE (VI) 12% POLYESTER (PL)



15. SCUBA STOCK SERVICE

NM 8000

78% VISCOSA (VI) 22% POLIESTERE (PL)

78% VISCOSE (VI) 22% POLYESTER (PL)



16. MADAM

NM 3500

20% VISCOSA (VI) 27% FIBRA METALLICA (ME)

35% POLIESTERE GRS (PL) 18% POLIESTERE (PL)

20% VISCOSE (VI) 27% METALLIC FIBER (ME)

35% GRS POLYESTER (PL) 18% POLYESTER (PL)



ICA 16 104



17. GEM

NM 3500

40% BABY ALPACA (WP) 18% LANA MERINOS EXTRAFINE (WV)
26% POLIAMMIDE GRS (PA) 16% POLIESTERE (PL)

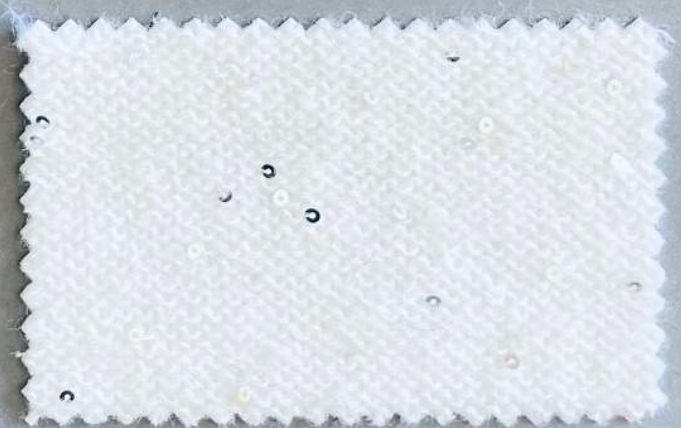
40% BABY ALPACA (WP) 18% EXTRAFINE MERINO WOOL (WV)
26% GRS POLYAMIDE (PA) 16% POLYESTER (PL)



RWS WOOL
ON DEMAND



ICA 16 104



18. ECHO

NM 7000

23% ALPACA SUPERFINE (WP) 32% LANA MERINO (WV)
45% POLIAMMIDE (23% GRS) (PA)

23% SUPERFINE ALPACA (WP) 32% MERINO WOOL (WV)
45% POLYAMIDE (23% GRS) (PA)



RWS WOOL
ON DEMAND



ICA 16 104